

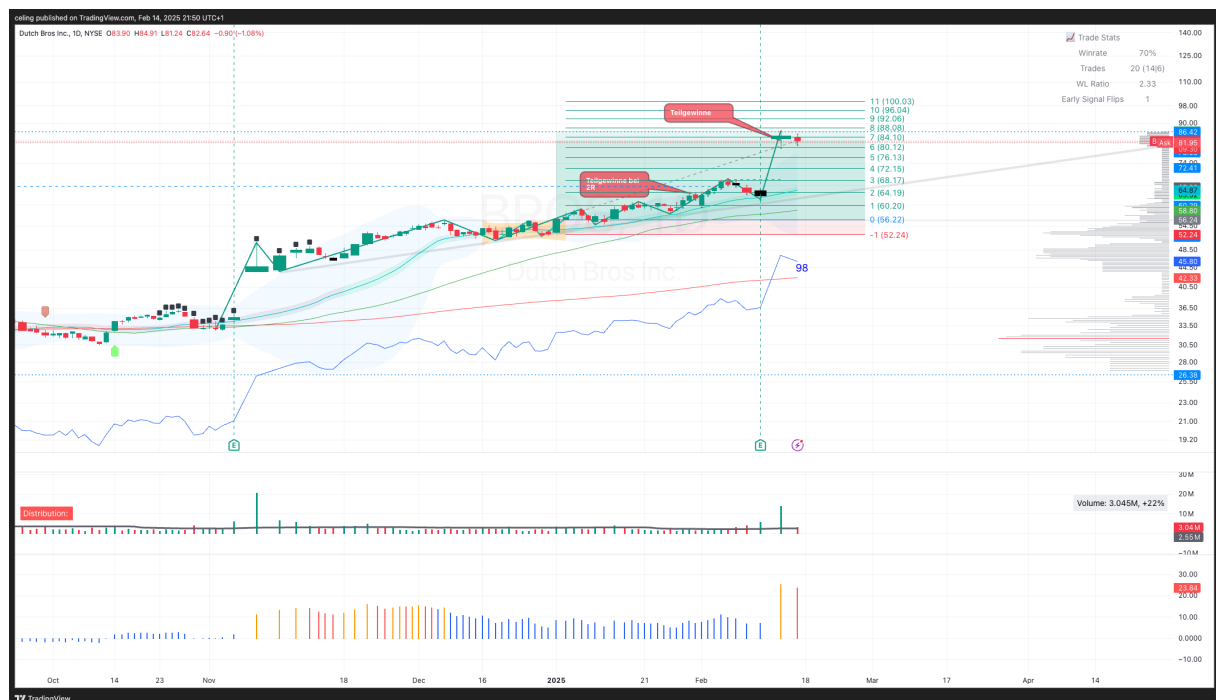
# KW 07/2025

## RHM: Position geschlossen



Postion mit 2R geschlossen.

## BROS



Nach dem Gap-Up durch die Earnings habe ich weitere Teilgewinne migenommen.

LRN



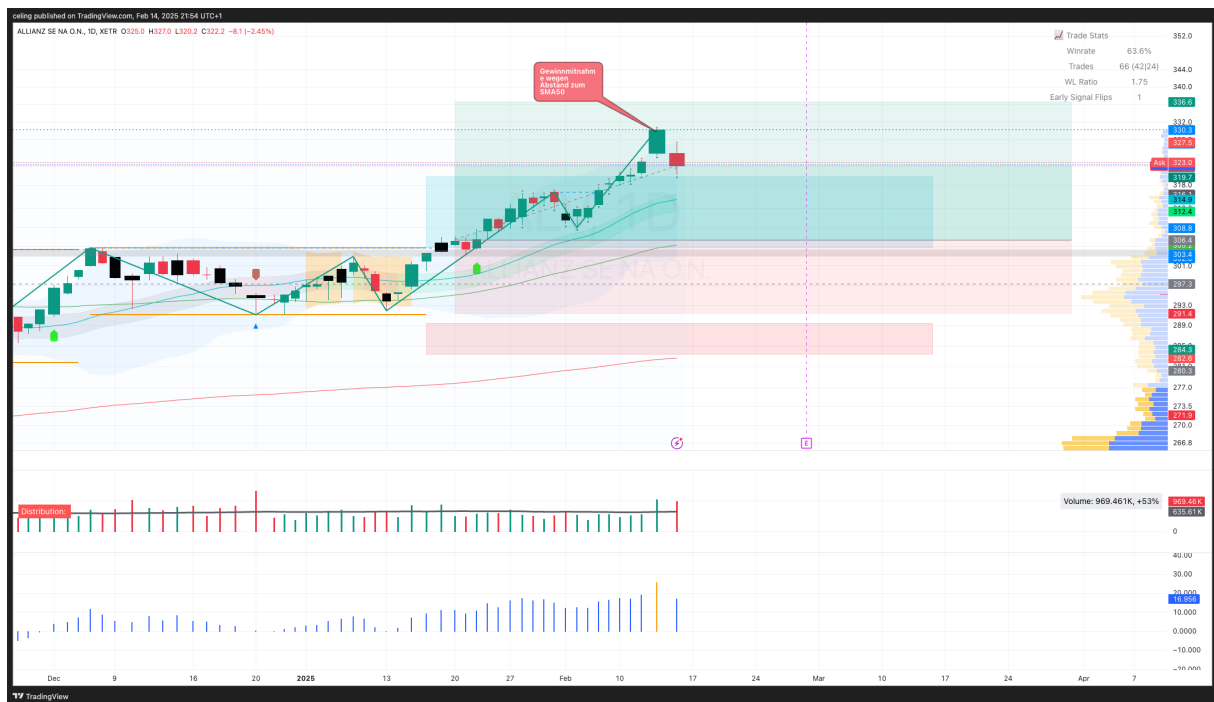
Weitere Teilgewinne durch Bewegungsstop mitgenommen, da Abstand zum SMA50 sehr groß war.

DB1



Teilgewinne bei 2R mitgenommen und so den Trade als Gewinner abgesichert.

## ALV



Teilgewinne wegen weitem Abstand zum SMA50 mitgenommen, obwohl der Stop bereits im Gewinn ist.

## FTDR



Ausgestoppt worden unterm vorherigen Tief. Verlust von 1R.

# PLNT

celing published on TradingView.com, Feb 14, 2025 08:47 UTC+1

Planet Fitness, Inc., 1D, NYSE O102.96 H104.19 L101.35 C103.86 +1.80 (+1.76%)



Ausgestoppt worden unter dem vorherigen Tief. Verlust von 1R

# CCL

celing published on TradingView.com, Feb 14, 2025 08:44 UTC+1

Carnival Corporation, 1D, NYSE O25.99 H26.34 L25.38 C25.86 -0.03 (-0.12%)



Ausstieg per Soft-Stop: Verlust von 0,87R.

## BKNG

Aufsatz eines saisonaler Trades, wahrscheinlich bislang aufgrund der Earnings gut gelaufen.  
Gute EXPE-Zahlen sind ggf. richtungsweisend. Abwärtstrend bereits gebrochen

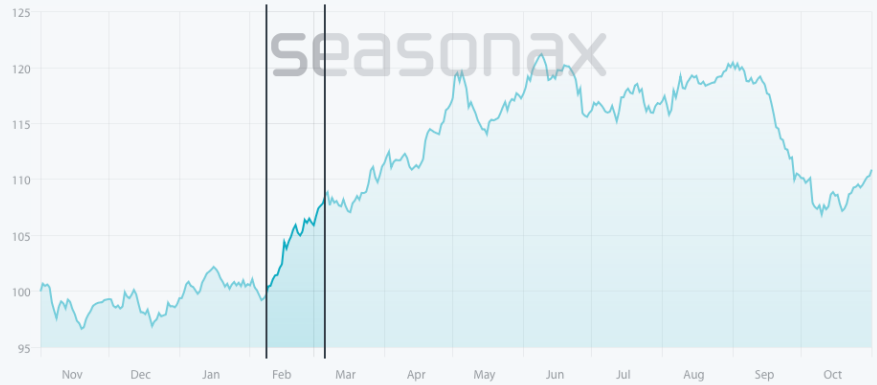
Booking Holdings Inc BKNQ  25y NASDAQ

 Search instruments ...

  7 Feb - 5 Mar  

Seasonality ▾ Patterns ▾      25 years (6 Feb 2000 - 6 Feb 2025) More ▾ 

Seasonal Trend of Booking Holdings Inc Over 25 Years



■ 218.22% Pattern ■ 0.71% Rest

**+218.22%**  
Annualized return 

**80.00%**  
Winning trades 

Return

+218.22%  
Annualized return 

+0.71%  
Annualized Rest 

+8.73%  
Average return 


+10.09%  
Median return 

Profit

**+432.89 pts**  
Total profit 

**+17.32 pts**  
Average profit 


Gains

20  
Gains 

+14.67%  
Profit 

+49.69%  
Max. profit 

Losses

5  
Losses 

-12.12%  
Profit 

-26.82%  
Max. loss 

Miscellaneous

25  
Trades 

19  
Trading days 

14.99%  
Standard deviation 

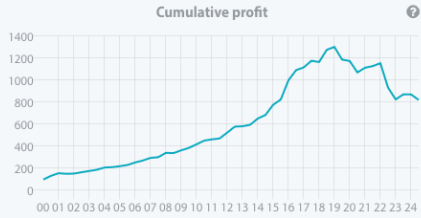
7.15  
Sortino ratio 

1 loss  
Current streak 

26  
Calendar days 

3.59  
Sharpe ratio 

62.77%  
Volatility 

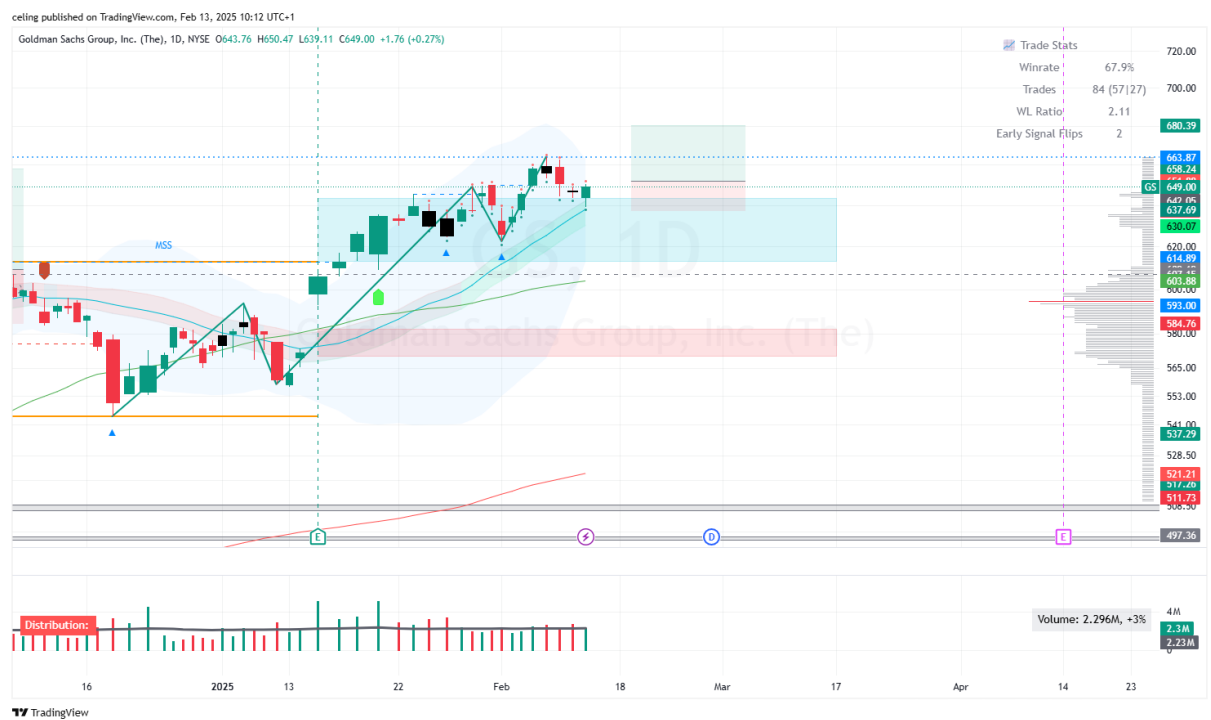


Start date	Start price	End date	End price	Profit	Profit %	Max rise	Max drop
07 Feb 2000	358.32	06 Mar 2000	536.37	+178.05	+49.69%	+49.69%	-16.80%
07 Feb 2001	15.98	05 Mar 2001	15.43	-0.56	-3.49%	+13.95%	-24.42%
07 Feb 2002	24.03	05 Mar 2002	27.36	+3.33	+13.86%	+13.86%	-9.16%
07 Feb 2003	7.43	05 Mar 2003	8.15	+0.71	+9.60%	+15.20%	-7.20%
09 Feb 2004	20.29	05 Mar 2004	23.98	+3.69	+18.17%	+21.49%	0.00%
07 Feb 2005	21.63	07 Mar 2005	23.03	+1.40	+6.46%	+6.46%	-4.03%
07 Feb 2006	20.87	06 Mar 2006	23.75	+2.87	+13.77%	+18.09%	0.00%
07 Feb 2007	45.24	05 Mar 2007	50.87	+5.63	+12.45%	+18.67%	-1.40%
07 Feb 2008	100.24	05 Mar 2008	117.33	+17.09	+17.05%	+26.09%	0.00%
09 Feb 2009	73.36	05 Mar 2009	81.65	+8.29	+11.30%	+17.12%	-7.12%
08 Feb 2010	198.86	05 Mar 2010	233.27	+34.41	+17.31%	+20.30%	0.00%
07 Feb 2011	433.36	07 Mar 2011	462.59	+29.23	+6.75%	+7.30%	-2.56%
07 Feb 2012	524.54	05 Mar 2012	637.04	+112.50	+21.45%	+22.05%	0.00%
07 Feb 2013	684.62	05 Mar 2013	712.10	+27.48	+4.01%	+4.01%	-2.77%
07 Feb 2014	1,184.88	05 Mar 2014	1,358.39	+173.50	+14.64%	+14.64%	0.00%
09 Feb 2015	1,024.07	05 Mar 2015	1,221.07	+197.00	+19.24%	+21.07%	0.00%
08 Feb 2016	965.24	07 Mar 2016	1,280.08	+314.84	+32.62%	+33.81%	0.00%
07 Feb 2017	1,584.65	06 Mar 2017	1,715.00	+130.35	+8.23%	+8.53%	0.00%
07 Feb 2018	1,866.13	05 Mar 2018	2,054.44	+188.31	+10.09%	+10.09%	-6.25%
07 Feb 2019	1,860.56	05 Mar 2019	1,730.59	-129.98	-6.99%	+3.11%	-9.59%
07 Feb 2020	1,892.81	05 Mar 2020	1,632.96	-259.85	-13.73%	+4.26%	-13.73%
08 Feb 2021	2,081.11	05 Mar 2021	2,286.82	+205.72	+9.88%	+16.38%	-0.68%
07 Feb 2022	2,461.23	07 Mar 2022	1,801.19	-660.04	-26.82%	+8.87%	-26.82%
07 Feb 2023	2,465.33	06 Mar 2023	2,590.46	+125.13	+5.08%	+5.36%	-5.58%
07 Feb 2024	3,676.32	05 Mar 2024	3,400.10	-276.22	-7.51%	+5.21%	-7.51%





GS



Eröffnung eines Trades mit aggressiven Einstieg am SMA20.

Alaska Air Group, Inc., 1D, NYSE **O73.89** **H75.21** **L69.36** **C72.54** **-1.24 (-1.68%)**



**TV** TradingView